

# FLOS

FU099517 Linen

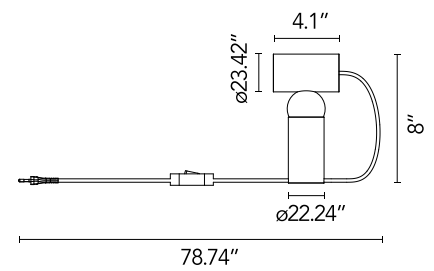
## Bilboquet

Designed by Philippe Malouin, 2023



6W

LED bulb table lamp with adjustable head, integrating bulb and cut-off providing direct lighting. Body made of a special pigmented polycarbonate deriving from a by-product of paper production rather than from petroleum. Adjustability through steel sphere treated with protective layer deposited in PVD. Useful length of the cable 2 mt. The cable can be adjusted and locked in place through a special slit in the base of the lamp. The product has been designed according to the ISCC standards and it is assembled with total absence of glued components so that it can be completely separated for future recyclability.



Are you a professional and your project needs consulting and support?

[BOOK AN APPOINTMENT](#)

### Main specifications

EAN	8059607059227
Mounting	Table
Environments	Indoor dry location
Light Source Type	Bulb
Lamp holders	GU10
Number of heads	1
Power (W)	6
System power (W)	6

### Physical

Color	Linen
IP internal	20

### Download

[Mounting instructions](#) PDF

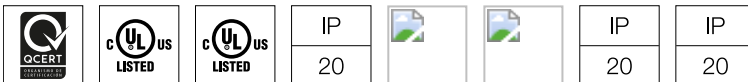
### Photometric Files

[LDT / IES](#) ZIP

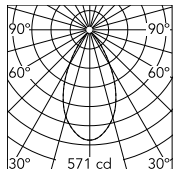
### Technical Drawings

[2D](#) ZIP

[3D](#) ZIP



## Schematic light drawing



Beam Angle: 54°

h(m)	E(lx)	D(m)
1	571	1.01
2	143	2.02
3	63	3.02
4	36	4.03
5	23	5.04

Luminous flux Luminaire  
615 lm

## Photometric

Extreme cut off No

## Electrical

Insulation class	II
Frequency (Hz)	60
Main voltage (Vac)	120
Dimmable	No
Dimming interface	Switch Integrated (Not Dimmable)
Plug type	Type A
Batteries inside	No